

# 8

# DATA SHEET



www.hydron-pumps.com

## REMOTE SENSOR TRAYS



Two remote sensor trays which allows any remote sensor to be mounted outside the drainpan. The SP2 is designed for the SH/MS and the SP3 is for use with both the SH/ES and SH/FS2 sensors

## SH/K3 ANTI-SYPHON VALVE

The Hydron Anti-Syphon valve is designed to prevent syphoning of the discharge line in installations where the end of the discharge line falls below the condensate pump.



The SH/k3 is suitable for use with all remote sensor condensate pumps.

## CHECK VAVLES FOR HARETL PUMPS

Model No	Body Material	Inlet	Outlet	Suitable For
VC-1	Brass	3/8" comp	3/8" comp	3/8" Copper
VCV-12	Polypropylene	3/8" 18 NPSM	3/8" ID Tube	KT3, PAB3
VCV-15	Brass	3/8" 18 NPSM	1/4" Comp	KT3, PAB3 A2SA

A range of replacement check vavles for use with the centrifugal condensate pumps manufactured by Hartell Milton Roy.

## ANTI-BACTERIAL TABLETS



Specially developed anti-bacterial tablets that prevent the buildup of harmful bacteria in condensate trays, reservoirs and other areas where condensate water may remain stagnant for a pre-long time.

## SH/K5 IN-LINE RESTRICTOR



In installations where the condensate pump used is chosen for the flow rate and not the pumping head. The pump may become noisy due to the lack of back pressure. By placing the inline restrictor in the discharge line, a back pressure is produced which lowers the noise of the condensate pump.

## 6-18mm REDUCER KIT



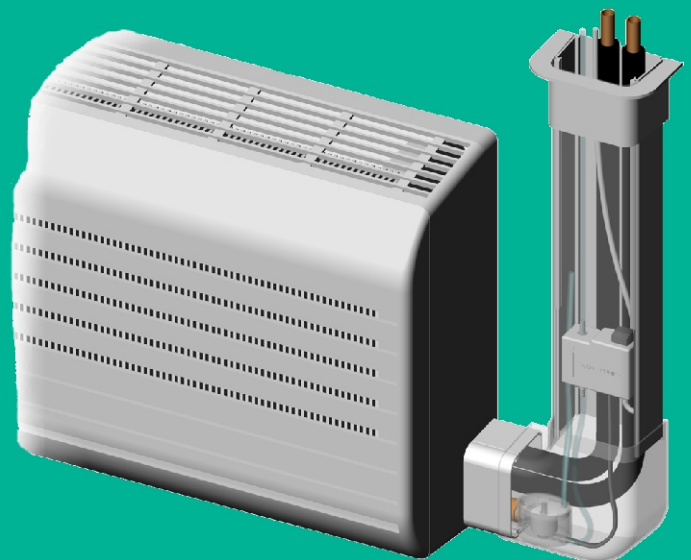
The 6-18mm reducer kit allows easy connection between condensate pumps and different sizes of drain pan or drain hose.

## UNIVERSAL REMOTE SENSOR DUCTING KIT

A universal ducting kit that allows any of the Nano pump range of remote sensor condensate pumps to be mounted within an attractive pipe ducting alongside the refrigeration pipes and insulations.

The DU1 provides a cost effective method of installing not only the condensate pump but also the refrigeration pipe work. The "click fit" assembly also allows quick and easy access to the condensate pump for maintenance purposes.

The slim profile of the nano pumps allows the pipe ducting to be mounted in the normal flat position, preventing sharp possibly restrictive bends in the refrigeration pipes.



### SANDYCOTT Ltd

Church Street, Eckington  
Sheffield, S21 4BH, England  
Phone: +44 (0) 1246 436632  
Fax: +44 (0) 1246 433372  
email: sales@hydron-pumps.com  
web: www.hydron-pumps.com

# ACCESSORIES